



# WOMEN'S

## Philanthropic Giving Circle of Central Florida

Collective ♥ Compassionate ♥ Catholic



*"If we wish to serve God and love our neighbor well,  
We must manifest our joy in the service we render to Him and them."  
St. Katharine Drexel, Patron Saint of Philanthropy*





# WOMEN'S

Philanthropic Giving Circle  
of Central Florida

Collective ♥ Compassionate ♥ Catholic

## Opening Prayer

Heavenly Father, You are the giver of life and everything we have is a gift from you.  
You have shown us your infinite generosity by giving us Your son, Jesus Christ.

You inspired St. Katharine Drexel to dedicate her life  
and selflessly share her treasures with those in need.

May her example help us to be faithful stewards of your abundant gifts.  
Teach us to be cheerful and grateful givers, so we can bring our Church  
spread throughout the world to its fullness of charity

We ask this through Jesus Christ our Lord. Amen.



St. Katharine Drexel  
Patron Saint of Philanthropy



# Welcome!



**WOMEN'S**  
Philanthropic Giving Circle  
of Central Florida  
Collective ♥ Compassionate ♥ Catholic



Experience the joy of  
philanthropy through  
collective giving!





# WOMEN'S

Philanthropic Giving Circle  
of Central Florida

Collective ♥ Compassionate ♥ Catholic

**Prayer**

**Preparation**

**Research**

**Strategic Planning**

**Zoom**

**Stakeholder Feedback**

## **Executive Committee Members**

Lori Tolland, Chairwoman

Sr. Maria Teresa Acosta, SCTJM, Spiritual Advisor

Lynda Dennis

Elizabeth Oros

Kimberlee Riley

Theresa Simon

Dr. Erika Wikstrom

Madelyn Weed, Foundation Representative





**The Catholic Foundation  
of Central Florida**  
Inspire Giving. Fund God's Work.

# Strategic Plan

2022 - 2024



01

## HARMONIZATION

Continue harmonization with chancery partners and improve relationships with parishes and schools to better understand their needs.



02

## EFFECTIVE COMMUNICATION

Continue to enhance awareness of CFOCF to engage more parishes, schools and donors through an effective communication strategy.



03

## PROGRAM EFFECTIVENESS

Focus on existing programs/services to enhance their effectiveness, accessibility and impact.



04

## SUSTAINABILITY

Continue to work toward self-sufficiency with all programs and services.



05

## ORGANIZATIONAL EXCELLENCE

Continue to enhance governance and administration to improve operational effectiveness and expression our faith values.

## Vision

To be the foremost philanthropic organization through which our community contributes to fund God's work in order to impact lives and promote the Gospel, which builds the Kingdom of God.

## Mission

To inspire and increase giving, to prudently invest the resources entrusted to us, and to capably steward those charitable gifts to support the spiritual and corporal needs of the community of the Diocese of Orlando.

## Values

### Faith-filled Passion

We nurture our faith to inspire others to transform lives through charitable giving.

### Collaboration

Through partnerships, we leverage community resources to maximize impact.

### Stewardship

We recognize that all gifts are from God and we are called to honor donor intentions and use prudence to return gifts with

### Transparency

We are open and honest in our communications to provide access to information.

### Servant Leadership

We listen and learn from our community and invest in initiatives to meet their needs.

### Impact

We engage donors in serving the needs of our community and advancing ministries of the Catholic Church.

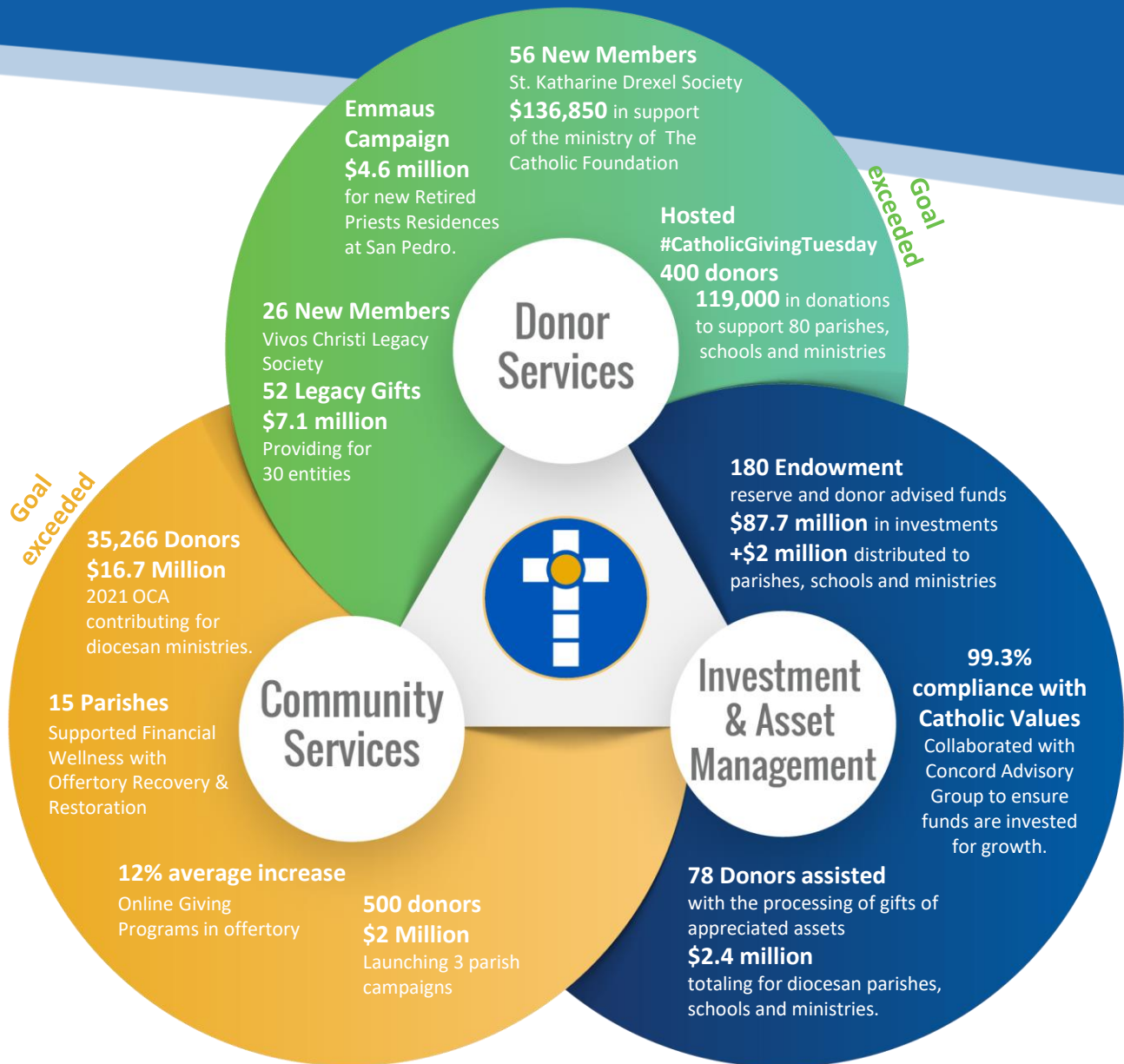


## The Catholic Foundation of Central Florida

*“The Catholic Foundation of Central Florida is our **best steward of investment** and management of the generosity of the many people who participate in the life of this local Church. My hope is that all parishes, missions and schools utilize the breadth of resources and knowledge through **The Catholic Foundation of Central Florida** for any development effort of the Diocese of Orlando. Since my appointment as Bishop of Orlando, I am impressed with its capabilities and rejoice that through the ministry of The Catholic Foundation of Central Florida we are able to fulfill our financial needs.”*

**Most Reverend John Noonan**  
Bishop of Orlando





# How We Serve

The Catholic Foundation of Central Florida's Mission is to inspire and increase giving, to prudently invest the resources entrusted to us, and to capably steward those charitable gifts to support the spiritual and corporal needs of the community of the Diocese of Orlando.



As a proven trustworthy philanthropic organization to give to and give through, The Catholic Foundation of Central Florida has received the Candid - GuideStar Platinum Seal of Transparency.

**Data Management + Communications + Advancement Services + Administration**





# WOMEN'S

## Philanthropic Giving Circle of Central Florida

Collective ♥ Compassionate ♥ Catholic

## Faith, Hope and Charity

The three theological virtues: By **faith**, we believe in God and believe all that he has revealed to us and that Holy Church proposes for our belief. By **hope** we desire, and with steadfast trust await from God, eternal life and the graces to merit it. By **charity**, we love God above all things and our neighbor as ourselves for love of God. *Charity, the form of all the virtues, "binds everything together in perfect harmony" (Col 3:14).*

## Who is your example?

### Charity:

love of God and love of man

### Philanthropy:

love of humankind





*We are ambassadors for Christ, as if God  
were appealing through us."  
(2 Corinthians 5:20)*



**WOMEN'S**  
Philanthropic Giving Circle  
of Central Florida

Collective ♡ Compassionate ♡ Catholic

## **Our Mission**

To altruistically serve with purpose, impact, connection and joy strengthening our community through values-based strategic, engaged and collective philanthropy. Taking inspiration from Mary, mother of our Savior, we proclaim “Yes” to God’s call to active works of charity as witnesses of faith and hope.





# WOMEN'S

Philanthropic Giving Circle  
of Central Florida

Collective ♥ Compassionate ♥ Catholic

## How does the WPGC Grant Funding?

Membership funds are pooled in a Donor Advised Fund and invested for growth in a Catholic compliant investment portfolio. Funds are distributed to address community needs through our annual grantmaking process. Catholic compliant 501c3 nonprofit organizations operating within the 9 counties of the Diocese of Orlando can submit a grant application. Members actively participate in the grant selection process.

### Top areas of charitable interest include:

Homelessness/Affordable Housing

Hunger/Food Insecurity

Children's Services/Education

Culture of Life/Pregnancy Resources





# WOMEN'S

## Philanthropic Giving Circle of Central Florida

Collective ♥ Compassionate ♥ Catholic

### What Membership Options are Available?

- \$1,000+ St. Anne Membership  
*(\$500 will go into the new Women's Philanthropic Giving Circle Endowment to sustain and supplement WPGC's ongoing legacy of impact in our community.)*
- \$ 500+ St. Elizabeth Membership
- \$ 250+ St. Mary Membership – available to women under 40 years of age

*(All members have equal voting regardless of membership level.)*

Membership donations are tax-deductible. Members are welcome to make a higher annual contribution to the WPGC donor advised fund and/or the endowment, if desired. Individuals and companies can choose to sponsor a woman's membership. \$50 of each membership will be reserved to cover general meeting expenses. At the end of each fiscal year, any unused funds which were held to cover expenses will be deposited into the WPGC DAF for granting.





**WOMEN'S**  
Philanthropic Giving Circle  
of Central Florida  
Collective ♥ Compassionate ♥ Catholic

## What is the time commitment?

- **Kickoff Mass & Meeting**
- **Grant Applicant Pitch Party**
- **Voting by Membership (online)**
- **WPGC Grant Awardee Celebration**
- **Grant Impact Site Visits (optional)**





**WOMEN'S**  
Philanthropic Giving Circle  
of Central Florida  
Collective ♥ Compassionate ♥ Catholic

# Show and Tell

*Share your name, city, parish, how you heard about the Women's Giving Circle and the woman who served as an example of the virtue of Charity in your life.*

*Then grab the most unique item you have within reach, show it to the group and share the story behind it.*





**WOMEN'S**  
Philanthropic Giving Circle  
of Central Florida  
Collective ♥ Compassionate ♥ Catholic

**Join us as a  
Founding Member  
Today!**



[cfocf.org/womensgivingcircle](https://cfocf.org/womensgivingcircle)





**WOMEN'S**  
Philanthropic Giving Circle  
of Central Florida  
Collective ♥ Compassionate ♥ Catholic



**Madelyn Weed, CFRE, CAP®**  
Vice President of Donor Services  
407-246-7188 | [mweed@cfocf.org](mailto:mweed@cfocf.org)

Send Mail To: P.O. Box 4905, Orlando, FL 32802-4905  
Office Location: 50 E. Robinson St., Orlando, FL 32801



Two are better than one,  
because they have a good reward for their toil.

Ecclesiastes 4:9



THANK  
YOU

[cfocf.org](http://cfocf.org)

